

Third Floor Available Space

- Pre-built/turnkey space highlights:
 - open space with lights, modern finishes, and courtyard view
 - 10 offices/breakout rooms and 2 conference rooms featuring glass walls and doors
 - open space with workstations
 - kitchen with seating and additional pantry area
 - reception area
 - phone rooms, filing/mail room, lockers, server room, and mother's room
 - furniture and desks
 - easy access from elevators



9,419 RSF

Third Floor



Workstation Area & Offices with Courtyard View



Reception & Phone Rooms



Kitchen & Pantry with Seating



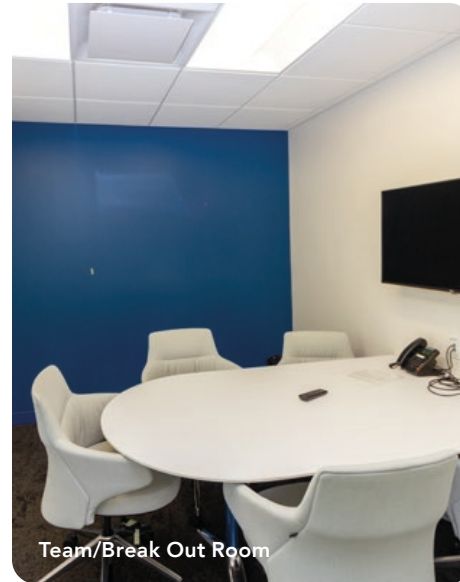
Conference Room



Workstation Area & Offices



Workstation Area & Offices



Team/Break Out Room



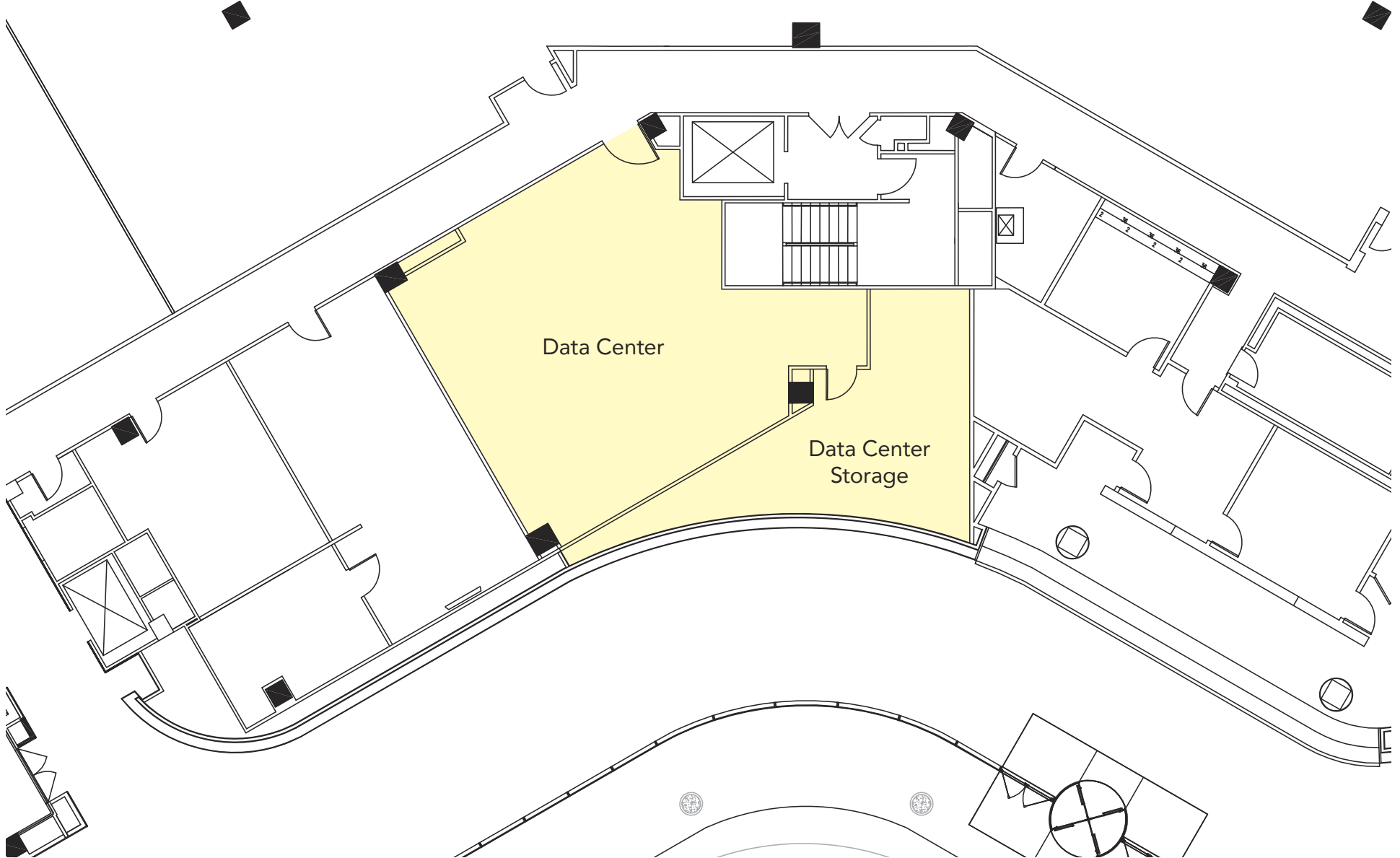
Lockers

THIRD FLOOR AVAILABLE SPACE

3001

STAMFORD SQUARE

3001STAMFORDSQUARE.COM



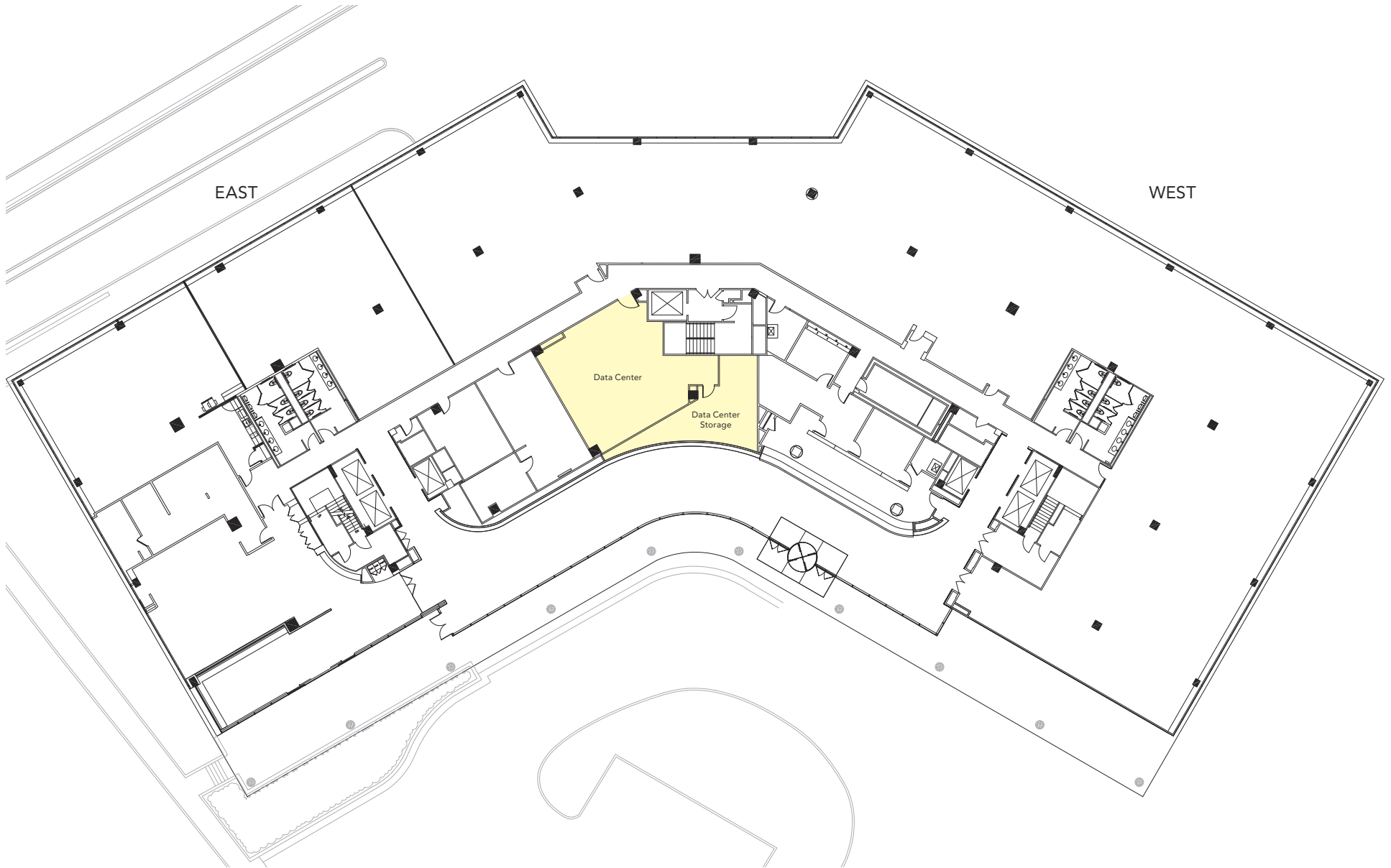
FIRST FLOOR: 2,072 RSF AVAILABLE



FOR LEASING INFORMATION:
Ed Tonnessen, Managing Director
203 705-2262 | edward.tonnessen@am.jll.com

707 Summer Street • Stamford, CT • 203 359-8500





FIRST FLOOR: 2,072 RSF AVAILABLE



FOR LEASING INFORMATION:
Ed Tonnessen, Managing Director
203 705-2262 | edward.tonnessen@am.jll.com

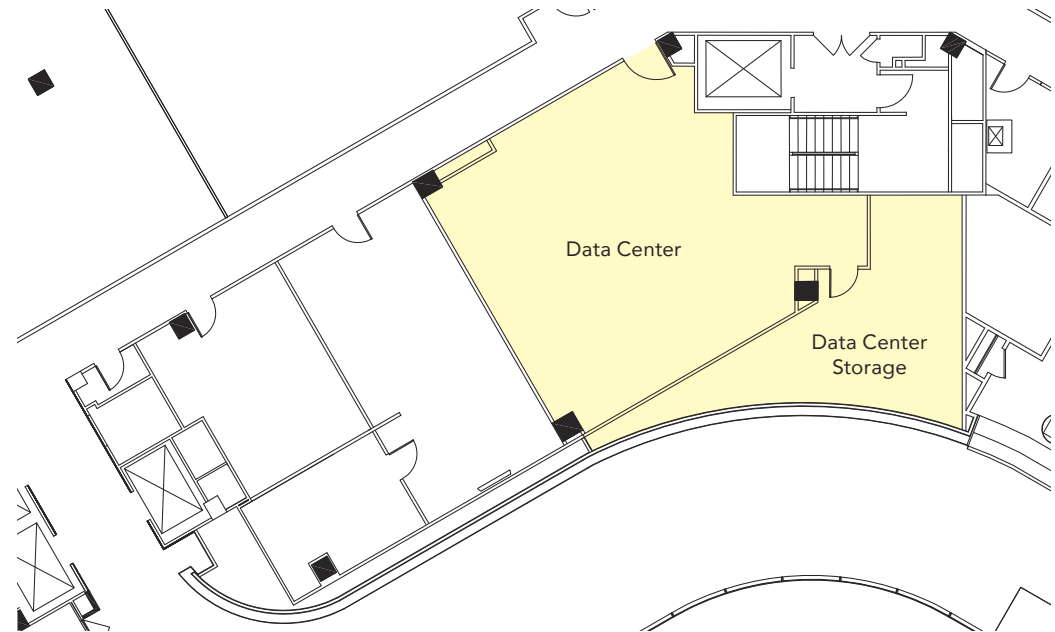
707 Summer Street • Stamford, CT • 203 359-8500



Data Center Available – 2,072 RSF

First Floor

- 18 server racks tied back to 2 PDUs
- 4 Liebert 20-ton CRAC units
- 650 kW emergency generator
- Generator connected to an APC 400 kW (N+1) UPS unit
- Fenwal Model 2320 FM-200 fire suppression system tied to the base building's fire alarm system
- Building electrical service is a 480/277 volt Y spot network fed by 4 sets of high voltage feeders (underground) that supply 6 network transformers.
- Fiber in the building is provided by Frontier, Lightpath, AT&T, Verizon Business, Level 3 & Fibertech, and there are two points of entry from Bedford and Summer Streets.





FIRST FLOOR: 2,903 RSF AVAILABLE



FOR LEASING INFORMATION:
Ed Tonnessen, Managing Director
203 705-2262 | edward.tonnessen@am.jll.com

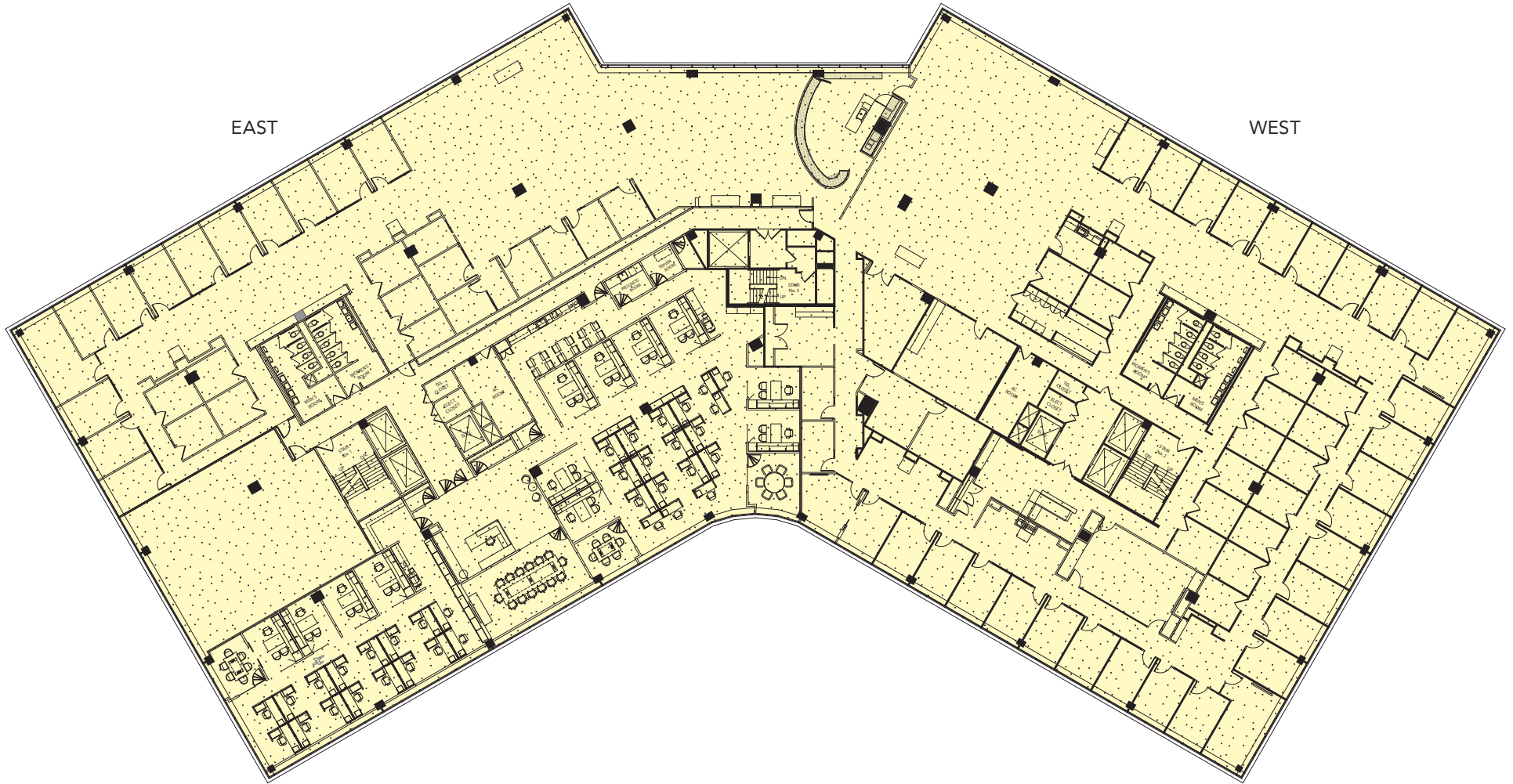
707 Summer Street • Stamford, CT • 203 359-8500



3001

STAMFORD SQUARE

3001STAMFORDSQUARE.COM



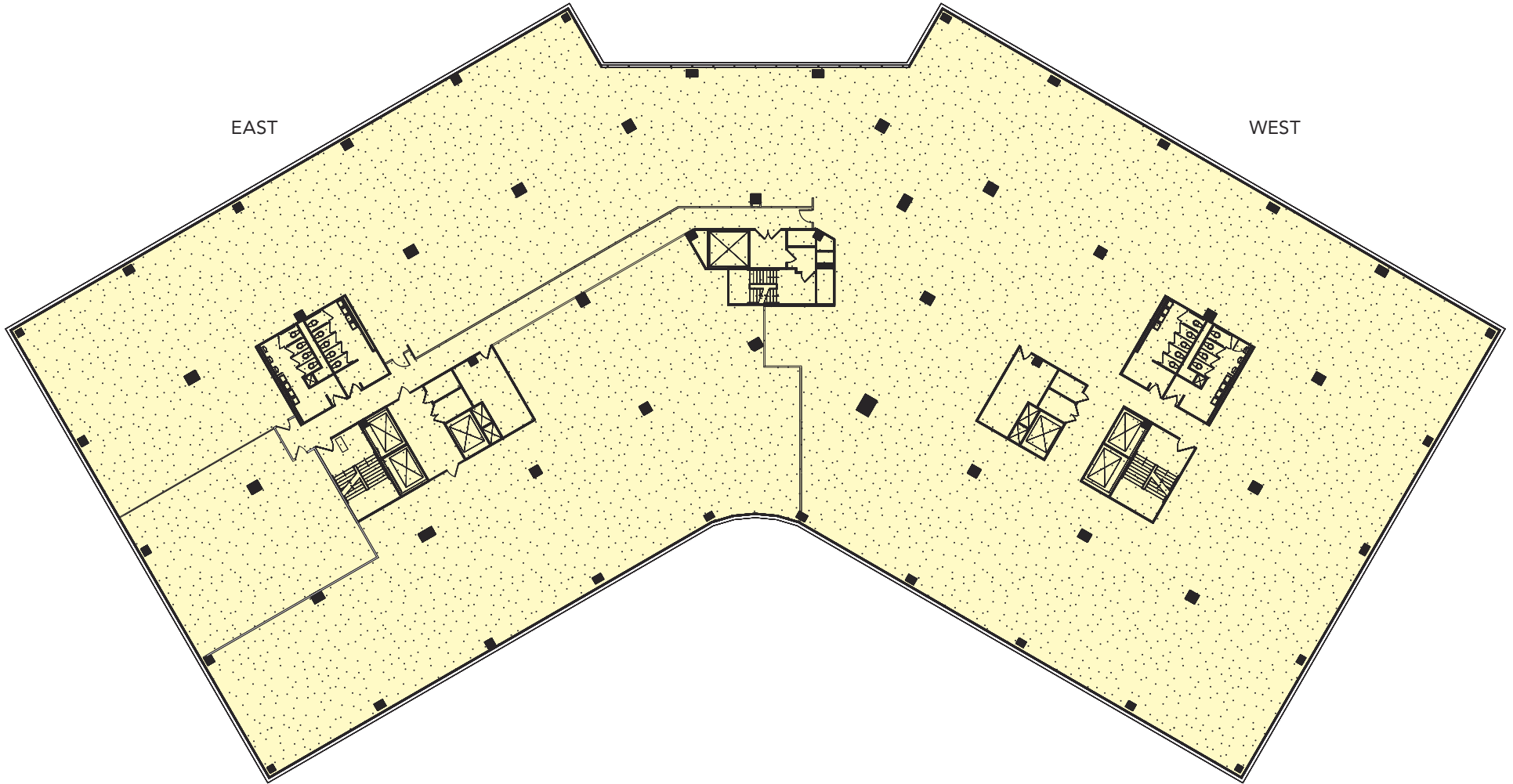
THIRD FLOOR: 44,597 RSF AVAILABLE



FOR LEASING INFORMATION:
Ed Tonnessen, Managing Director
203 705-2262 | edward.tonnessen@am.jll.com

707 Summer Street • Stamford, CT • 203 359-8500





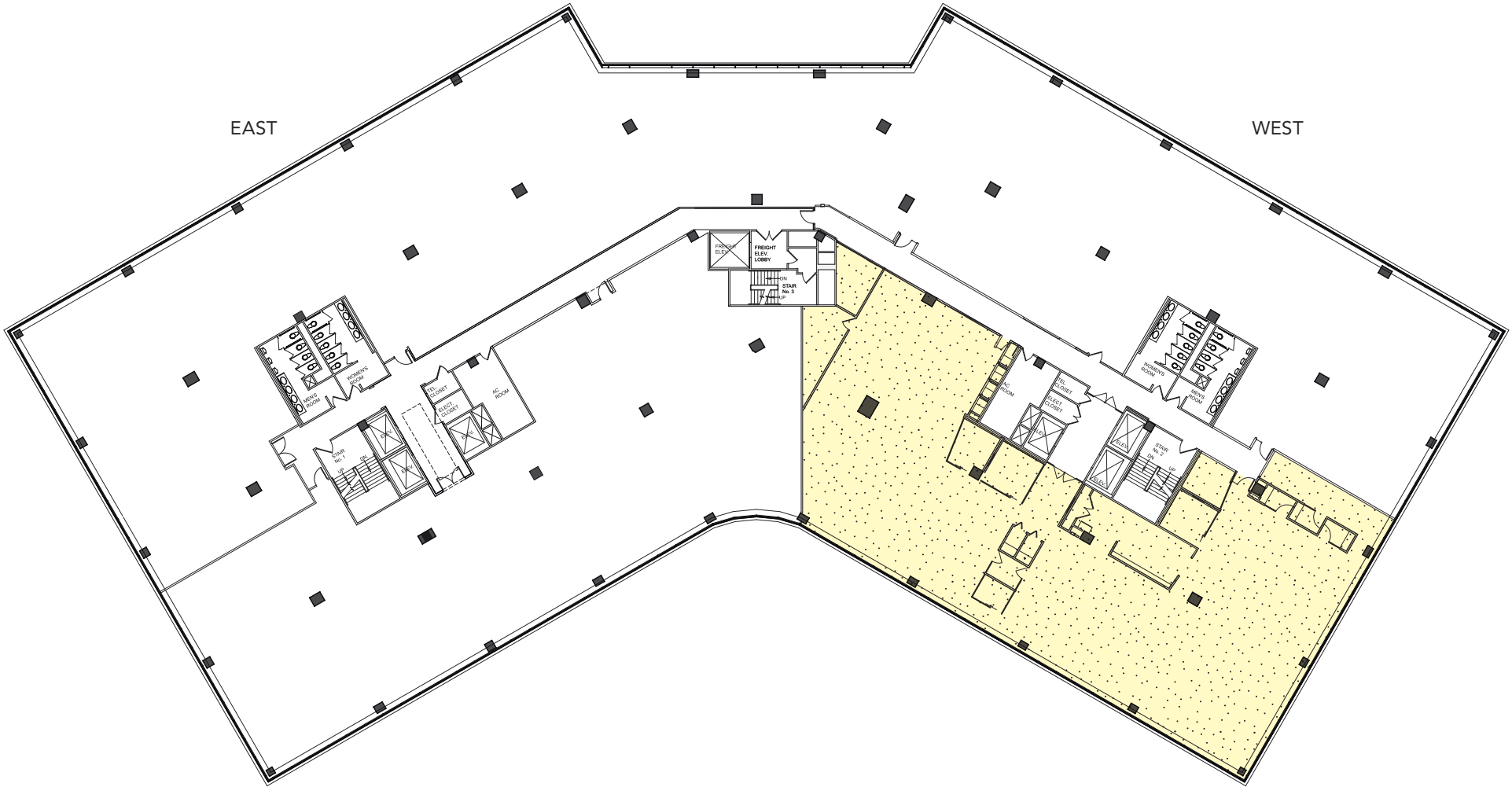
THIRD FLOOR: 44,597 RSF AVAILABLE



FOR LEASING INFORMATION:
Ed Tonnessen, Managing Director
203 705-2262 | edward.tonnessen@am.jll.com

707 Summer Street • Stamford, CT • 203 359-8500





FIFTH FLOOR: 9,973 RSF AVAILABLE



FOR LEASING INFORMATION:
Ed Tonnessen, Managing Director
203 705-2262 | edward.tonnessen@am.jll.com

707 Summer Street • Stamford, CT • 203 359-8500

